

Provox® Life™ LaryTube™ is for maintaining the opening of the stoma while supporting pulmonary rehabilitation with the use of a Provox Life HME.

Provox Life LaryTube is a soft, silicone tube designed to prevent the stoma from shrinking.

For some people, the stoma may shrink or need more support - Provox Life LaryTube maintains the opening of your stoma while allowing you to wear a heat and moisture exchanger (HME). It is an option that is often used immediately after total laryngectomy surgery and may be used long-term for those needing added stomal support. The LaryTube or Provox® Life™ Sensitive Adhesive can also be used as an alternative to your adhesive when the skin is irritated or during radiotherapy if you are temporarily unable to use your regular adhesive.

► **Your clinician will determine if you should use a LaryTube and which size and type would work best for you.**

- Provox Life LaryTube is available in Standard, Standard with Ring, Fenestrated and Fenestrated with Ring.
- Standard and Fenestrated tubes can be secured with Provox TubeHolder, Provox LaryClip or Freevent Neckband.
- LaryTube with Ring is designed to be secured with a Provox® Life™ adhesive.



Freevent™ Neckband



Provox® TubeHolder



Provox® LaryClip™



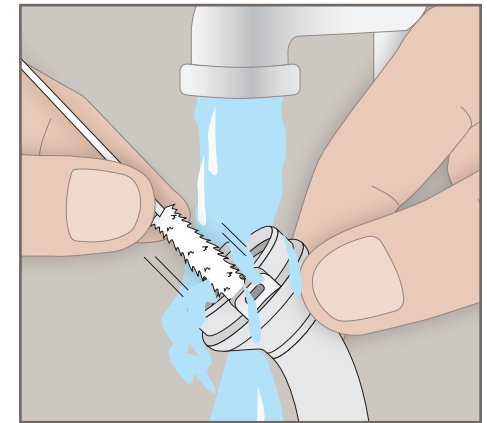
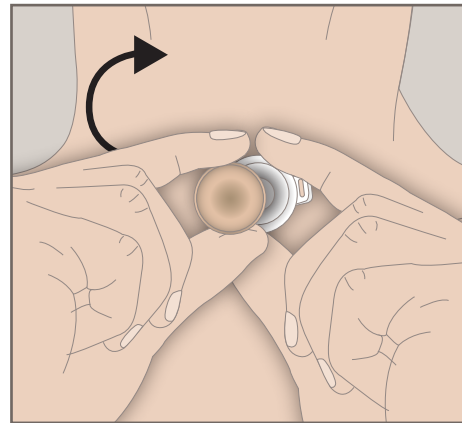
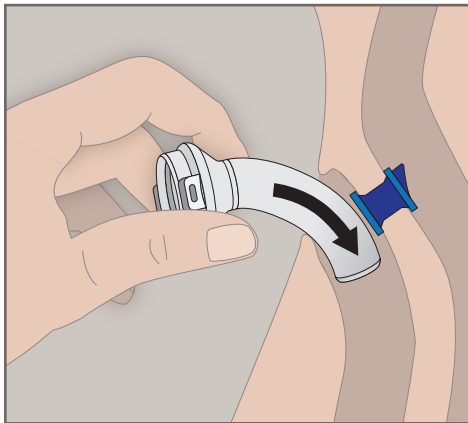
Provox® Life™ Shower



Tip: Contact your clinician if you experience irritation from the tube or if you feel the tube has become too large or too small. You may need a different size.

Tip: Provox Life LaryTube is compatible with Provox Life Shower. You can only use Shower if your LaryTube has a tight fit.

Your clinician can help you determine which Provox Life LaryTube is the best solution for you.



► **INSERT** Provox Life LaryTube by lightly moistening the tube with water or a thin coating of water-soluble lubricant. Insert LaryTube into the stoma. Attach LaryTube to Provox LaryClip, a Provox TubeHolder or Freevent Neckband. If using the Provox Life LaryTube with Ring, attach with a Provox adhesive. Insert Provox Life HME into the SecureFit™ coupling – the click ensures it is secure.

► **WEAR** your Provox Life LaryTube as instructed by your clinician. If you are having difficulty getting used to wearing your LaryTube, wear it for short periods of time, gradually increasing the length of time as tolerance improves.

► **REMOVE** the HME while keeping the LaryTube in place by holding it in place with one hand. With your other hand, hold Provox Life HME and gently twist, lifting the HME up from one edge, like opening a door.

► **CLEAN** the Provox Life LaryTube using the appropriate size Provox TubeBrush at least once a day or whenever it becomes clogged with secretions. Provox Brush can be used to clean the punctures of a fenestrated LaryTube. Clean and disinfect the LaryTube according to the Instructions for Use.

Tip: Place the LaryTube as directed by your healthcare provider. If you also have a voice prosthesis, avoid catching the voice prosthesis with the end of the LaryTube as this may cause accidental dislodgement.



Provox® TubeBrush



Provox® Brush